

2 Highfield Close  
West Byfleet  
KT14 6QR



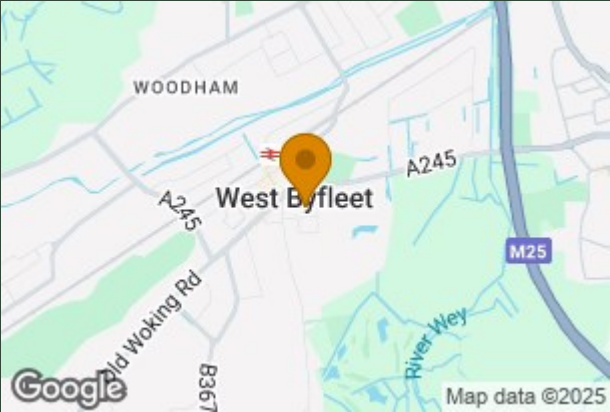
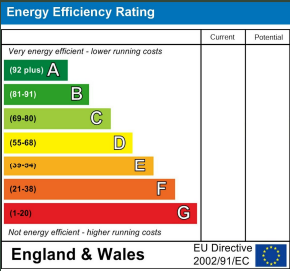


2 Highfield Close  
£850,000

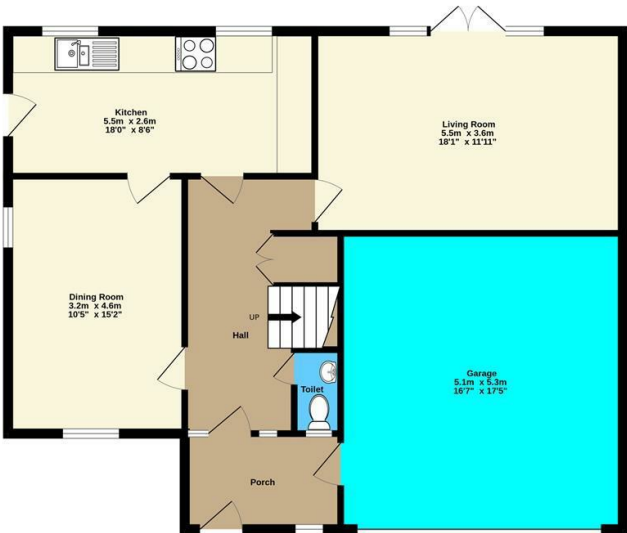
Local Authority  
Woking Borough Council

Council Tax Band  
G

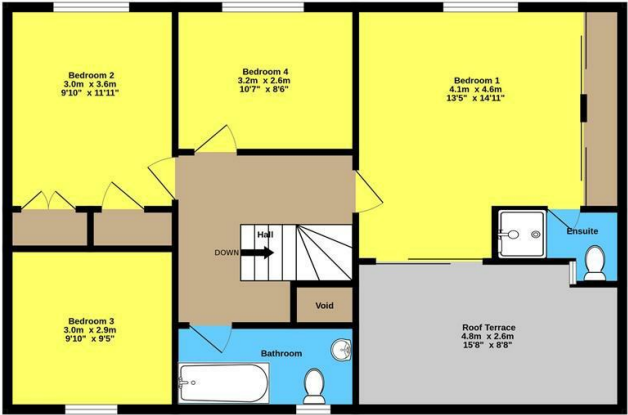
Directions



Agents Note: Whilst every care has been taken to prepare these particulars, they are for guidance purposes only. All measurements are approximate and are for general guidance purposes only and whilst every care has been taken to ensure their accuracy, they should not be relied upon and potential buyers/tenants are advised to recheck the measurements



Ground Floor Includes  
Garage  
92.8 sq.m. (999 sq.ft.) approx.



1st Floor Excludes Roof  
Terrace  
68.4 sq.m. (736 sq.ft.) approx.

Marketed By mint homes Ltd

TOTAL FLOOR AREA : 161.2 sq.m. (1735 sq.ft.) approx.

Marketed by mint homes Ltd. Whilst every attempt has been made to ensure the accuracy of the information contained here, measurements of doors, windows, rooms and any other items are approximate and no responsibility is taken by any error. Prepared by Simon Lee  
Made with Metropix ©2025



Mint Homes  
14 Nicholas Gardens  
Pyrford  
Surrey  
GU22 8SD



#### Contact

01932 336177  
hello@minthomes.uk  
minthomes.uk

